

# Optional Handle for Fire Door Closing Measurement HDC-1

- Specialized for fire door closing force measurement
- Enable fire door closing inspection under the Japanese Building Standard Laws and regulations
- Avoids scratching a door by using the included urethane pad



## Urethane pad

**Protection Pads** are included to protect the door surfaces from damages.



Specialized for fire door closing force measurement according to Article 112 in Enforcement Ordinance (amended in 2005) of the Building Standard Law of Japan.

## Measuring Procedure (Measurement of the closing force of a fire door)

Mount the handle and the flat tip to the force gauge.



Attach the red ball side to the door frame and stabilize the gauge. (as the image below)



Close the door gently and read the gauge when it measuring needle stops.\*





\* Do not apply strong force to the force gauge when closing the door. **Close gently.**

Specifications	
Model	HDC-1
Capacity	500N
Weight	Approx. 330g
Dimensions	See [Dimensions]
External Diameter of Urethane Pad	Approx. 16mm
Accessories	Urethane pads (*5 pcs), Force gauge fixing bolts (4pcs)

\* Consumable Urethane Pad is pasted onto the A-2/S-2 flat tip for measuring **door surface protection**.

**[Urethane Pads for Replacement]** Urethane pads are sold separately.




Model	Description	Image
HDC-SU	Urethane Pads: 5pcs/set (Measuring surface protection pads for replacements)	

Examples of Product Configuration	
<b>Example 1 Code: 1H2001A</b> Force tests up to 200N by using mechanical force gauge.  Mechanical Force Gauge: FB-200N Optional Attachment: HDC-1	 <p>Image: Example 1</p>
<b>Example 2 Code: 1H2001B</b> Force tests up to 200N by using simple digital force gauge.  Digital Force Gauge: DST-200N Optional Attachment: HDC-1	
<b>Example 3 Code: 1H2001C</b> Force tests up to 200N by using digital force gauge with internal memory. Recommended especially when data management is required.  Digital Force Gauge: DSV-200N Optional Attachment: HDC-1	

\* Refer to the specification of each product for details.



\* Product configuration varies depending on the shape and characteristic of the sample, and measurement conditions.

\* The recommended capacity of force gauge varies depending on the expected force to be loaded.

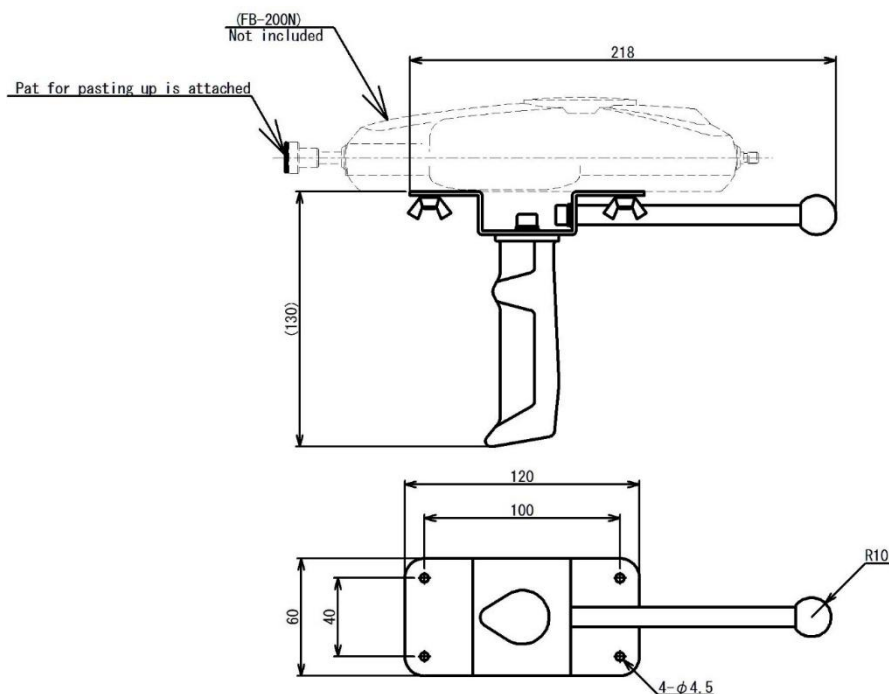
Mountable Force Gauges		
Digital force gauge <b>DSV/DST series</b>	Digital force gauge <b>ZTA/ZTS series</b>	Mechanical force gauge <b>FB series</b>
High-cost performance with easy data management on PC	Precise measurement with faster sampling range and wide functions	Simple analog force gauges with peak hold function (*1)
		

\* Attachable to the basic models limited to 1000N.

\*1 Unapplicable to some old models, please contact us for further information.

Related products	
<p>Load cell for door tester <b>DM-2000N</b></p>	<p>Muscle strength and workload tester <b>RZTA/RDSV/RFB series</b></p>
<p>Exclusively for measuring closing force of automatic doors and revolving doors according to JIS and EN standards.</p>	<p>A set of attachments is included for various measuring purposes, including door opening/closing forces and moving object loads.</p>
	

## [Dimensions]



Unit: mm

## [Cautions]

- Specifications are subject to change without prior notice.
- A force gauge (sold separately) is required to use this product.
- This product is designed for force testing only. Do not use it for any other purposes.
- Do not copy and use this content without authorization.

SHRADDHA IMPEX  
Authorized Distributor

Email: shraddhaimpex@gmail.com / sales@shraddhaimpex.net  
Web: www.shraddhaimpex.net  
Contact: +919819530352 / +918591279918

