

# Cap Clamping Jig CCJ series

- Designed for gripping round-shaped samples tightly by the 4 pins
- Ideal for insertion / extraction test of round samples including caps of cosmetic package or connectors
- Standard pins, notch pins and long clamp pins type available



CCJ-100N



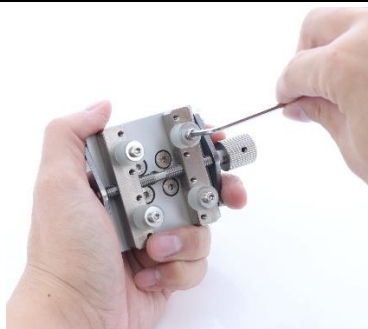
CCJW-100N



CCJ-100N Testing Image

## How to install test samples

Set the pins in position and fastening the screws.



Set the sample.



Fix the sample by turning the handle.




Specifications						
Model	CCJ-100N	CCJ-100N-01	CCJ-100N-02	CCJW-100N	CCJW-100N-01	CCJW-100N-02
Pins	Standard pins	Notch pins	Long clamp pins	Standard pins	Notch pins	Long clamp pins
Clamp dimensions	φ7-50mm			Φ10-100mm		
Pins material	Urethane	Stainless	Urethane	Urethane	Stainless	Urethane
Capacity	100N					
Dimensions	See [Dimension]					
Weight *1	Approx. 250g	Approx. 300g	Approx. 260g	Approx. 330g	Approx. 380g	Approx. 340g
Mounting thread	M6					

\*1 Weight of the attachment is also applied as a load on the force gauge. Consider it when selecting the capacity of a force gauge.

\* According to the structure and the position of the sample, unbalanced might happen during the measurement. Using the universal joint for more precise measurement. (Separate sold)




\* It is not suitable for fixing soft or easy-to-deformation samples.

Examples of Product Configuration CCJ-100N	
<p><b>Example 1</b>                      <b>Code:1C2008A</b> For simple tension test up to 100N</p> <p>Digital Force Gauge: DST-200N Motorized Test Stand: MX-500N Optional Attachment: CCJ-100N Optional Attachment: GT-30 (Vise grip)</p>	 <p>CCJ-100J Example 1 Image</p>
<p><b>Example 2</b>                      <b>Code:1C2008B</b> For functional and versatile testing up to 100N</p> <p>Digital Force Gauge: ZTS-100N Motorized Test Stand: MX2-500N Optional Attachment: CCJ-100N Optional Attachment: GT-30 (Vise grip) Optional Attachment: UJ6-1000N Optional Cable: CB-528</p>	

\* Refer to specifications of each product for details.





\* Product configuration varies depending on the shape and characteristic of the sample, and measurement conditions.

\* The recommended capacity of force gauge varies depending on the expected force to be loaded.

Mountable Force Gauge		
DST/DSV series	ZTS/ZTA series	FB/PS/PSM series
Digital force gauge with excellent cost-performance capable to manage data with PC	Digital force gauge with high precision, featuring high sampling rate and a variety of useful functions	Mechanical force gauge for easy Handling
		

\* Refer to specifications of the individual product for details.




\* Select suitable force gauge to correspond with the mounting screws of attachment.

Mountable Test Stand			
Motorized Test Stand		Manual Test Stand	
MX-500N MX-1000N	MX2-500N MX2-1000N MX2-2500N MX2-5000N EMX-500N EMX-1000N	SVL-1000N SVH-1000N (*)	HV-500N2 HV-1000N HV-3000N
			
MX-500N	EMX-1000N	SVL-1000N	HV-500N2

\*Grip mounting adaptor GF-1 (sold separately) is required.

Related Products		
Vise Grip <b>GT-30/2000N</b>	Self-centering Vise Grip <b>GTW-2500N</b>	Jacobs Chuck <b>GC-5/15</b>
		
It is used to grip and fix samples, being mounted on a vertical test stand. Available in capacity from 250N up to 2000N.	Self-centering vise grip for the vertical type test stand. It enables to fix the samples at the center.	It is ideal for gripping round cylindrical shaped samples. Designed to prevent the samples from slipping.
Pin Grip <b>CP-150N</b>	Universal Joint <b>UJ6-1000N/UJ10-5000N</b>	Optional adapter <b>CCJ-AD6</b>
		
It is ideal for gripping wire or needles for low range force measurement, or measurement in limited space.	It is an optional attachment to prevent unbalanced load.	It is an optional attachment to prevent unbalanced load.

\* Refer to specifications of the individual product for details.

Related Accessories		
Standard Pins <b>ST-P</b>	Notch Pins <b>ST-01P</b>	Long Clamp Pins <b>ST-02P</b>
		
Urethane made pins. It is ideal for gripping plastic made samples such as bottle caps.	Stainless made pins. It is ideal for gripping samples such as resin made connectors.	Urethane made pins. It is ideal for fixing slim samples such as cosmetic containers.

\* Pins are sold in set of 4.

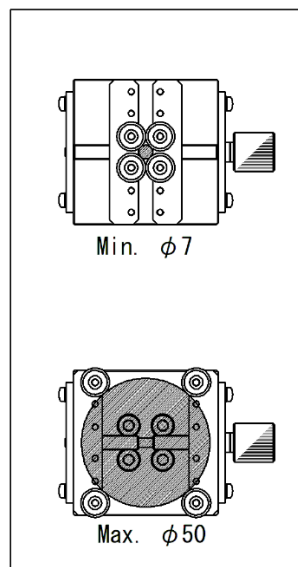
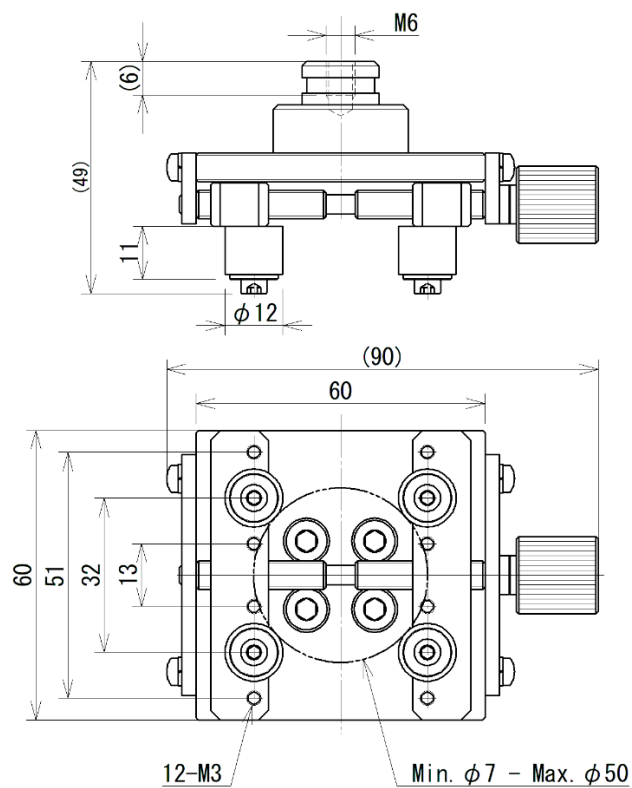
\* Refer to [Dimension] for details.

### [Custom made solutions]

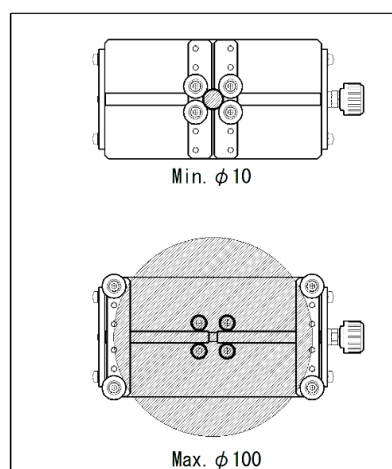
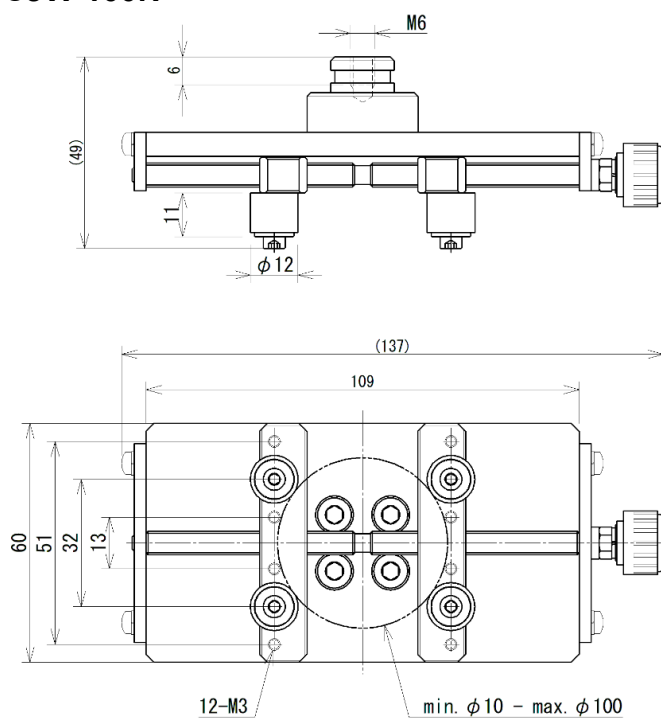
We offer custom made options including change of length, materials of the pins and clamp dimensions. Please contact us for details.

## [Dimension]

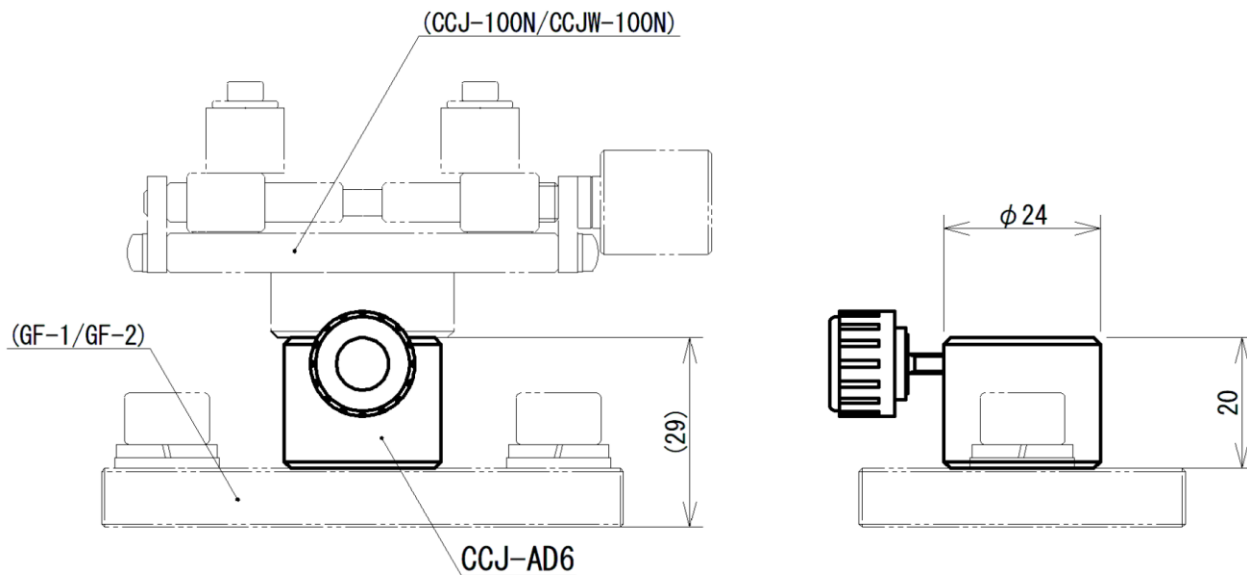
### CCJ-100N



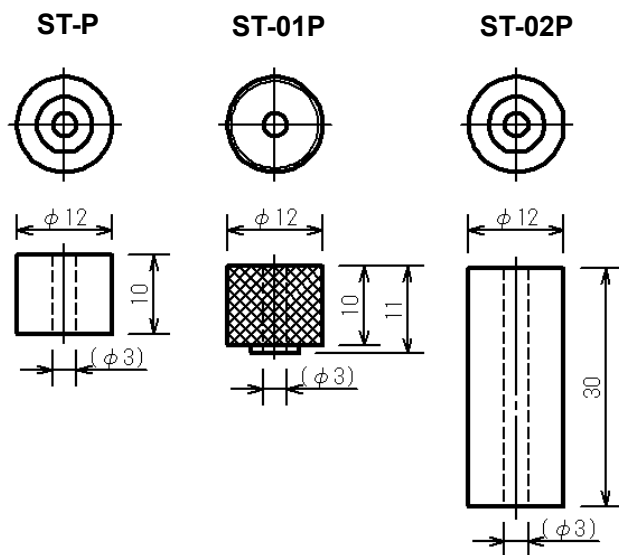
### CCJW-100N



**CCJ-AD6** \*CCJ series and GF-1/GF-2 are sold separately.



## Fixing Pin



Unit: mm

**[Cautions]**

- Information in this document is subject to change without prior notice.
- This document is product descriptions and handling precautions, and do not guarantee various characteristics or safety.
- This product is designed for force measurement purpose only.
- Do not copy and use this content without authorization.
- A force gauge (sold separately) is required to use this product.
- Some samples may not be suitable to measure with this product.

SHRADDHA IMPEX  
Authorized Distributor

Email: [shraddhaimpex@gmail.com](mailto:shraddhaimpex@gmail.com) / [sales@shraddhaimpex.net](mailto:sales@shraddhaimpex.net)  
Web: [www.shraddhaimpex.net](http://www.shraddhaimpex.net)  
Contact: +919819530352 / +918591279918

