

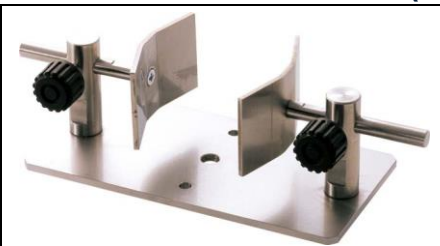
Tables for Food Texture Analyzer

Optional tables 3



(Container holder table, Stick holder)

Tables to hold samples are available.

Container holder table (FR-BG-60)

	Feature
	It holds a container not to slip down.
	Example of use
	In the case where semi-solid sample in a container is measured.

[Measurement examples]

Viscosity of soup	Stiffness of salmon roe
	

1. Disk probe

1. Cylindrical probe

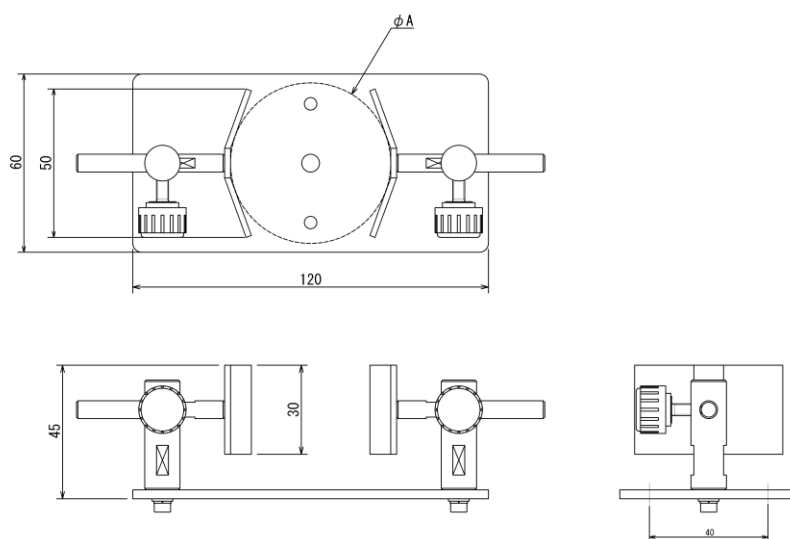
[Specifications]

Model	FR-BG-60
Maximum diameter of a container ØA	φ14~φ80
Maximum height of a container	15~100
Weight	295g

*Unit: mm

* We also offer customized sizes of all attachments.


[Dimensions]



*Unit: mm

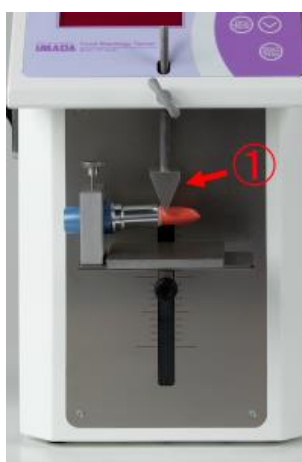
*We also offer customized sizes of all attachments.

Stick holder (FR-ST-25)

	Feature
	It is suitable to hold a stick shaped sample such as a lipstick. With it, force to bend or snap a sample can be measured.
	Example of use
	A test for the snap strength of a lipstick

[Measurement example]

The snap strength of a lipstick



1. Wedge probe (FR-KS series)

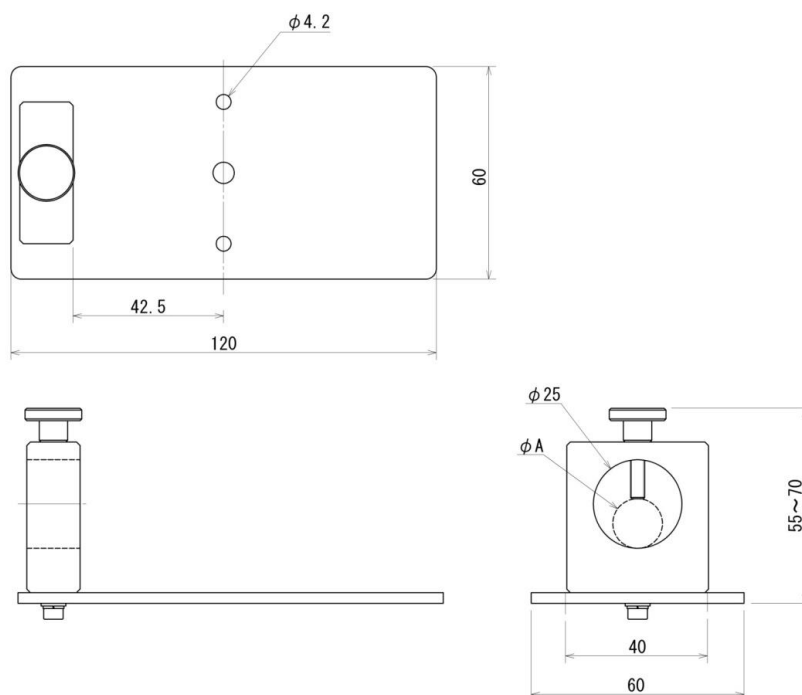
[Specifications]

Model	FR-ST-25
Diameter of a sample ϕA	$\phi 14 \sim \phi 25$
Material	Aluminum
Weight	253g

*Unit: mm

*We also offer customized sizes of all attachments.

[Dimensions]



*Unit: mm

* We also offer customized sizes of all attachments.

[Cautions]

- Information in this document is subject to change without prior notice.
- This document is product descriptions and handling precautions, and do not guarantee various characteristics or safety.
- This product is designed for force measurement purpose only.
- Do not copy and use this content without authorization.
- Some samples may not be suitable to measure with this product.

SHRADDHA IMPEX
Authorized Distributor

Email: shraddhaimpex@gmail.com / sales@shraddhaimpex.net
Web: www.shraddhaimpex.net
Contact: +919819530352 / +918591279918

