




Grips for Food Texture Analyzer

For tensile tests



Small grip, Film grip (standard/wide), and Grip special for noodle

The grips are suitable for tensile tests of thin or stick shaped samples.
Different sizes and types of grips are available.

Film grip series (FR-SC-3, FR-FC series)

| Small grip for FRT (FR-SC-3) | Film grip for FRT (FR-FC-21) | Film grip (wide) for FRT (FR-FC-41) |
|---|---|--|
|  |  |  |
| Feature | | |
| <p>The grips are suitable for tensile tests such as taking a cherry's stem or pulling packaging film to check the tensile strength.</p> <p>*We sell a grip one by one, so in the case where you grip a sample from both upper and lower sides, please purchase 2 grips.</p> | | |
| Sample example | | |
| Checking for force to take cherry's stem off, or the strength of packaging film and so on | | |

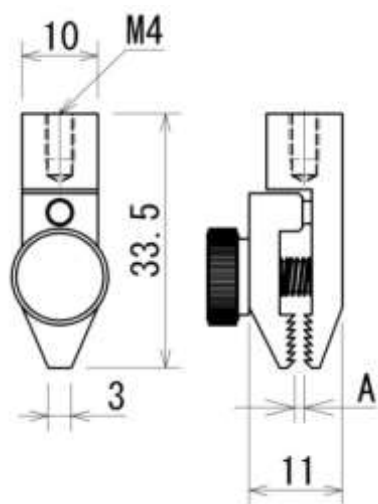
[Measurement examples]

| Taking a cherry's stem off | Pulling film |
|---|---|
|  |  |

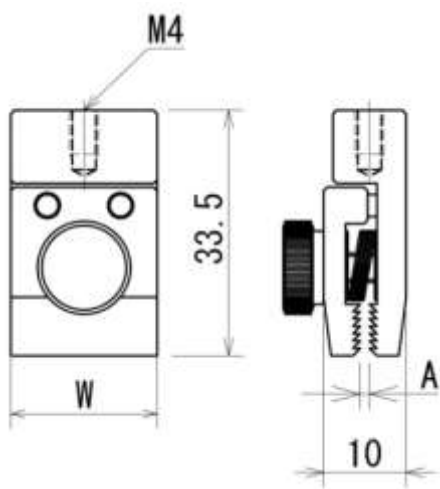
1. Sample holder table
(FR-UP series)

*We sell a grip one by one.

[Dimensions]



Small grip for FRT



Film grips for FRT

[Specifications]


| Model | FR-SC-3 |
|----------------------------|----------|
| Width W | 3 |
| Opening width A | 1 |
| Material of the grip parts | Aluminum |
| Weight | 10g |
| Capacity | 100N |

| Model | FR-FC-21 | FR-FC-41 |
|----------------------------|----------|----------|
| Width W | 20 | 40 |
| Opening width A | 3 | |
| Material of the grip parts | Aluminum | |
| Weight | 18g | 33g |
| Capacity | 100N | |

*unit: mm

*We will provide made-to-order sizes of all probes and tables if required.

Grip special for noodle (FR-NP-25)

|  | Feature |
|---|---|
| | It is fit to measure chewing texture such as pasta or noodles. It can grip wider area of a sample, so it is unlikely that it cuts a sample. *We sell one by one, so in the case where you grip a sample from both upper and lower sides, please purchase 2 grips. |
| | Sample Example |
| | Pasta, noodles and so on. |

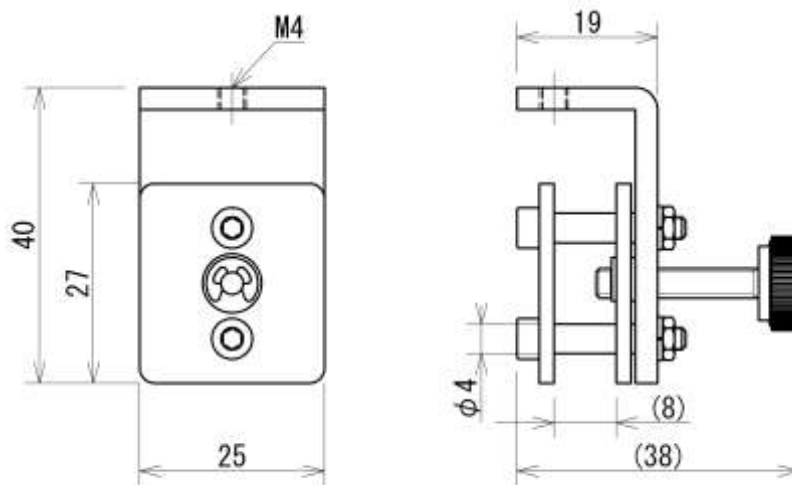
[Measurement example]

Pulling and breaking noodles



*We sell a grip one by one

[Dimensions]



[Specifications]

| Model | FR-NP-25 |
|------------------------------|----------|
| Maximum diameter of a sample | φ4 |
| Weight | 53g |
| Capacity | 50N |

*unit: mm

*We will provide made-to-order sizes of all probes and tables if required.

[Cautions]

- Information in this document is subject to change without prior notice.
- This document is product descriptions and handling precautions, and do not guarantee various characteristics or safety.
- This product is designed for force measurement purpose only.
- Do not copy and use this content without authorization.
- Some samples may not be suitable to measure with this product.

SHRADDHA IMPEX
Authorized Distributor

Email: shraddhaimpex@gmail.com / sales@shraddhaimpex.net
Web: www.shraddhaimpex.net
Contact: +919819530352 / +918591279918

