

## Jacobs Chuck GC-5/15

- Ideal for gripping round rod-type samples
- Secures sample tightly with firm gripping
- Suitable for tensile and compression test



How to install test sample		
Open the chuck with the handle.	Insert the sample.	Fix it with the handle.


Specifications			
Model	<b>GC-5</b>	<b>GC-15</b>	<b>GC-15-M10</b>
Capacity	500N	1000N	1000N
Opening width (dia.)	Approx. 0.5 to 6.5mm	Approx. 2.0 to 13mm	Approx. 2.0 to 13mm
Size	See the Dimensions		
Weight*1	Approx. 235g	Approx. 500g	Approx. 500g
Mounting screws	M6	M6	M10
Attachment	Tightening handle	Tightening handle	Tightening handle

\* Soft samples may break at the point of clamping.

\* It may not be suitable for some deformable samples.

\* It may not be suitable for slippery or hard samples.

\*1 Weight of the attachment is also applied as a load on the force gauge. Consider it when selecting the capacity of a force gauge.




Examples of Product Configuration	
<p><b>Example 1 Code: 1G2003A</b> For tensile and compression test up to 500N with high functionality and versatility</p> <p>Digital force gauge: ZTS-500N Motorized Test Stand: MX2-500N Optional Attachment: GC-5 Optional Attachment: GT-30 (Vise grip) Optional cable: CB-528</p>	
<p><b>Example 2 Code: 1G2004A</b> For tensile and compression test up to 1000N with high functionality and versatility</p> <p>Digital force gauge: ZTS-1000N Motorized Test Stand: MX2-1000N Optional Attachment: GC-15 Optional Attachment: GT-30 (Vise grip) Optional cable: CB-528</p>	

Example 1 Image



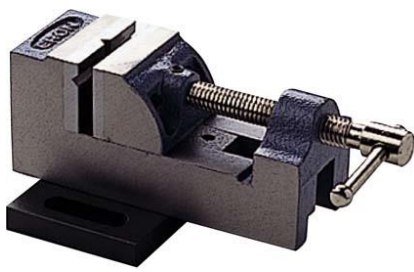

\* Refer to the specification of each product for details.

\* Product configuration varies depending on the shape and characteristic of the sample, and measurement conditions.

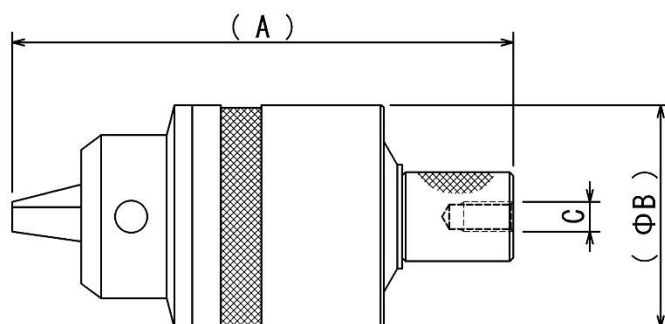
\* The recommended capacity of force gauge varies depending on the expected force to be loaded.

Mountable Force Gauges		
DST/DSV Series	ZTS/ZTA series	FB/PS/PSM series
Digital force gauge with excellent cost-performance capable to manage data with PC	Digital force gauge with high precision, featuring high sampling rate and a variety of useful functions	Mechanical force gauge for easy handling
		

\* Select suitable force gauge to correspond with the mounting screws of attachment.

Related Products		
Pin Grip CP-150N	Flat Chucks GC-1100/GC-1200/GC-5000	Vise Grip GT-30
Designed for gripping thin wire-type materials.	Grips with a wide opening for samples in various thickness.	To be mounted on test stand for fixing samples.
		
Attachment Adapters EJ6-1000N/EJ10-5000N		
For use between force gauge and attachment to fix samples easily to the attachment.		
		

## [Dimensions]



Model	A	B	Screw hole C
GC-5	66	dia.32	M6
GC-15	101	dia.46	
GC-15-M10			M10

Unit: mm

## [Cautions]

- Specifications are subject to change without prior notice.
- A force gauge (sold separately) is required to use this product.
- This product is designed for force testing only. Do not use it for any other purposes.
- Some samples may not be suitable to grip with this product.
- Do not copy and use this content without authorization.

SHRADDHA IMPEX  
Authorized Distributor

Email: shraddhaimpex@gmail.com / sales@shraddhaimpex.net  
Web: www.shraddhaimpex.net  
Contact: +919819530352 / +918591279918

